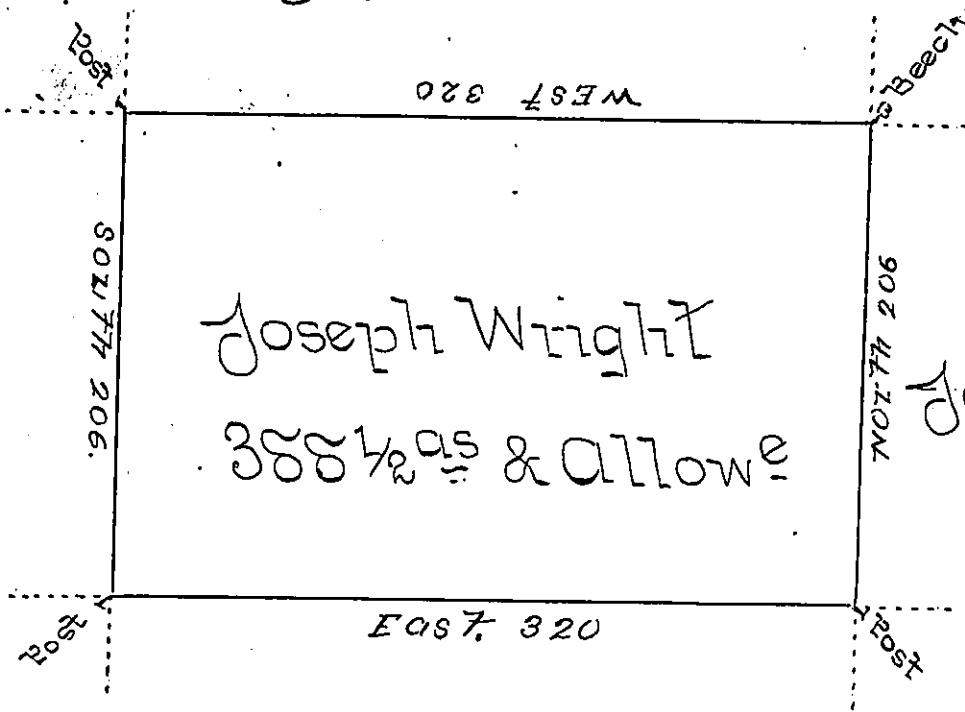


Francis Fisher
C-66-214

C-167-90

L-329



Guy Bryan
C-17-246

A-28-299

Joseph Stretch

D-39-128

John Heyl

D-39-148

D-39-127

A Draught of a tract of land ----- Called
 Situate joining Bond surveyed for Francis Fisher
 & others in Luzerne (formerly North) County contain-
 ing three hundred & eighty eight Acres $\frac{1}{2}$ & Allowe of
 six Percent for Roads &c. Surveyed for Joseph Wright
 the 25th Day of August 1787 in pursuance of a War-
 rant Dated the 27th Day of July 1787

by Wm Gray D.S.

To John Bukens Esq^r }
 Survey Genl - }

IN TESTIMONY that the above is a copy of the original remaining on file in
 the Department of Internal Affairs of Pennsylvania, made
 conformably to an Act of Assembly approved the 16th day of
 February, 1833, I have hereunto set my Hand and caused
 the Seal of said Department to be affixed at Harrisburg,
 this fourth day of October 1898-

James W. Patton
 Secretary of Internal Affairs.